

For the Easiest, Most Reliable Online Backup

How it works

- **After Installing SystemSafe** on your PC, SystemSafe scans your computer hard disk to identify files that need to be backed up. Those selected files then form what is called your “backup set.” SystemSafe then sends your backup set over the internet to our data centers where they are stored safely and securely. Files can also be chosen manually.

- **Common-File Technology** is applied to your “backup set” files already stored on the NetMass data center servers for greater efficiency. These files remain in your “backup set” and never need to be re-sent to our data center servers unless they change. This greatly reduces data sending times.

- **Block Differential Technology** is also applied to files in the “backup set.” This technology determines the exact portion of a file that has changed. Only changed portions need to be transmitted to our data center server. Again, greater efficiency.

- **Compression** is applied to the changed blocks identified in the previous step. This even further reduces the “backup set” size and optimizes the transmission and storage of your “backup set”.

- **Encryption** converts your compressed “backup set” to an unreadable and completely safe format for transmission and storage over the Internet.

- **Transmission**, the final step, sends the optimized “backup set” to our offsite data center servers where it remains, safe and secure, until you need it.



Built on the technology of the world's No. 1 solution for protecting PC data

- **SystemSafe™** offers security and reliability that far exceeds conventional backup methods.

- **Proven.** SystemSafe technologies protect the data at thousands of major corporations and is a proven, thoroughly tested solution.

- **Secure.** All your data is encrypted before it leaves your computer with 128-bit AES technology. This is the same method used by the US Government and financial institutions. Absolutely nothing leaves your computer unencrypted.

- **Versioning.** SystemSafe keeps 10 versions of your data files for the ultimate in advanced data protection. You can recover/restore any of these versions as you wish.

- **Offsite.** Our backup data centers are physically separated from your data, a key benefit to SystemSafe. Offsite protection, at one time only available to large corporations, means you are protected against physical catastrophes such as floods, fires, hurricanes, theft, sabotage or other disasters that may occur locally.

- **Data Centers.** Our tier-1 enterprise-class data centers employ redundant and mirrored technologies – two or more of everything. All data is stored in encrypted format. The servers are protected by firewalls that are constantly configured to reject wide-ranging protocols which might make a machine vulnerable to hackers.

SystemSafe™ Features

• **Hassle-Free Backup** automatically starts whenever an internet connection is detected or at a set time predetermined by you. Backups can be performed nightly while you sleep which relieves you of the administrative burden of backup. Manual backups are also fully supported.

• **Point-and-Click Restore** allows for simple, fast file recovery 24 hours a day, 365 days a year. Downtime in the event of loss, damage, sabotage, malware or theft is minimal.

• **SystemRestore™ Technology** allows users to restore their system configuration to any date in the past 45 days. Available when you perform a full system backup, your machine can be restored to the exact same look-and-feel prior to a disaster, complete with all applications and data.

• **Block Differential** file comparison saves only the changed portions of files rather than the whole file. This reduces the average backup session from hours to minutes and even allows efficient backup over dial-up.

• **Backup Restart Technology.** You may stop or delay the backup at anytime if you need to use your computer. When resumed, the backup will continue to send any previously unsent files.

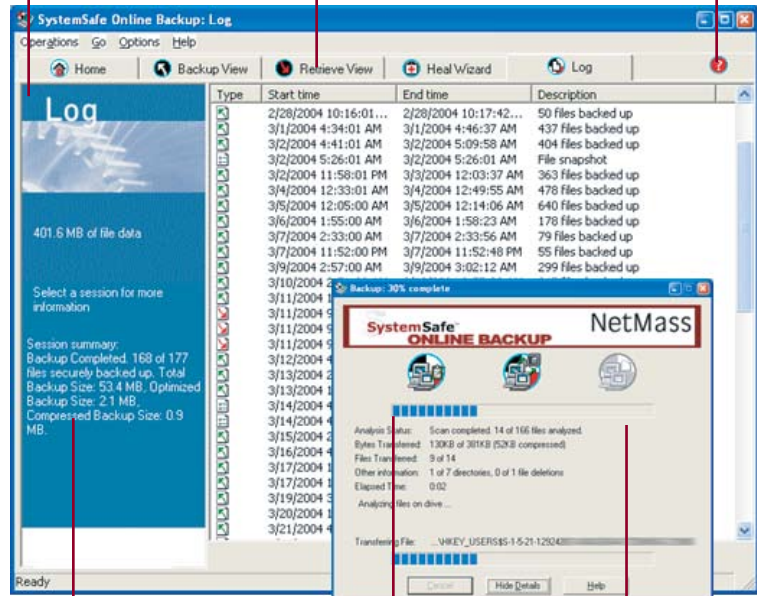
• **Common-File Technology** increases the speed of backups by storing only one copy of files that have been distributed and saved by multiple users (e.g., the operating system and applications). This technology greatly reduces your backup time and makes full system backup over dial-up connections feasible.

• **Flat Rate Pricing** eliminates pricing guesswork. Pricing details and a FREE trial available at www.netmass.com

Detailed log entries describe the exact files that are stored at the backup data center.

Tabbed windows and a clean layout make for user-friendly backup

"Localized Help" always displays help regarding the exact items you are using. No searching... no hassles.



"Block Differential Technology" means that only small portions of a changed file actually need to be backed up. Combined with data compression, this results in a backup size that is small enough to work well even over slow dial-up connections. Backup over fast DLS and cable is a breeze.

"Common File Technology" removes the need to transmit files that already exist on the server. Most operating system and application program files will never need to be transmitted over the line. This makes full system backups feasible over dial-up lines.

"Backup Restart Technology" you can stop or delay the backup at any time if you need to use your computer. When resumed, the backup will continue to send any previously unsent files.

System Requirements

- Windows XP
- Windows NT/2000
- Windows Me
- Windows 98
- DSL/Cable/LAN or Dial-up Connection